



Volume 35, Spring 2006

The Eleventh International D. H. Lawrence Conference

Mark your calendars for the Eleventh International D. H. Lawrence Conference, "Return to Eastwood," to be held in Eastwood, Nottinghamshire, on August 16-21, 2007. Talks and events are already scheduled at Durban House, Nottingham High School, Moorgreen Reservoir, and, of course, the University's Lawrence pavilion. The call for papers and more details of the event will be ready very shortly. The conference will be interwoven with the annual Eastwood Lawrence Festival, so members who would like a longer stay will have plenty of Lawrence events to enjoy.

Elections to the Executive Committee

Eleanor H. Green

Since we haven't had elections for members of the Executive Committee for several years, it seems that the best arrangement is to declare all five committee positions open for this year. I've already received some self-nominations for these positions and

strongly encourage others to apply. Being a member of the Executive Committee is an excellent way to become more closely involved with other Lawrence scholars and to assist with developing an active professional organization in new directions. Even if you don't win in this particular election, you have certainly increased your visibility for the next one. And the responsibilities of this position are not onerous!

We also have open the very important position of President-Elect. I would encourage all those who have been active with the DHLSNA in the past to consider taking on this post. The President-Elect assumes the presidency in January 2009.

In order to stagger the election of officers for the Society, I'm recommending amending the bye-laws to have the President-Elect and the Newsletter Editor (now called the Editor-in-Chief) elected in even-numbered years and the Secretary and Membership Treasurer elected in odd-numbered years. I also suggest that in the future we elect two committee members with the President-Elect and the Newsletter Editor and three with the Secretary and Membership Treasurer.

It will take time for this to shake down in the case of Executive Committee members since we're catching up with elections this year for all five positions. My idea is that any new person elected to the board this fall be automatically be given a two-year term and that we then determine either by vote count or by lottery (or both in the case of ties) which of the incumbents re-elected in the fall serve for one-year and which for two-year terms. After that we'll be back on track.

Unless there is strong opposition, I'm recommending continuing Lou Greiff as Membership Treasurer and Julie Newmark as Secretary, pending elections next year. They have both agreed to continue their fine service.

The majority of the Executive Committee has approved a proposal that

elections be done by mail rather than at the MLA business meeting, which has recently had very low attendance.

These changes in the by-laws now need to be ratified by the membership so that we can move ahead with elections this fall. I've included a ballot for voting on this matter by all members in good standing. Come fall, I'll be recommending some further changes in the bye-laws with a new description of officer responsibilities once these changes have been approved by the Executive Committee—be prepared!

Dues Increase

For many years now the DHLSNA has had some of the lowest dues of any professional organization in the country. While we are not insolvent, having more money would mean additional funds to promote Lawrence studies, help support the preservation of sites related to Lawrence, encourage participation by younger scholars in Lawrence-related activities, and make up for increases in postage costs. It would also give us greater visibility and allow for more activities without creating a dues structure that is prohibitively expensive.

The Executive Council has approved an increase in dues to \$25 a year (\$150 for ten years). Since we wish to encourage younger scholars and retain our older members, we suggest holding dues for students and retired members at \$10 (\$60 for ten years for retired persons).

There is a place on the enclosed ballot to endorse or reject the proposed dues increase.

Membership

By now you should have received the new Directory for 2004-2006, a very large one this year, as it includes all those individuals who became members of the Society by attending the Tenth International D. H. Lawrence conference in Santa Fe. We hope that most of you will continue your membership in the Society when this year ends. Please review the information in the Directory and send any corrections or updates to Lou Greiff at greiff@alfred.edu. The Society owes a debt of gratitude to Lou and to his assistant, Pat Sweeney, for this enormous service to the Society.

The D. H. Lawrence Review

We are still working on the reorganization of *The D. H. Lawrence Review* under a new structure and new bye-laws. Bill Harrison, the former editor, had put together most of an issue, which we will try to produce this fall. It appears that the work that he and some earlier editors carried out almost single-handedly for many years will now be distributed among several individuals to create a more reasonable workload.

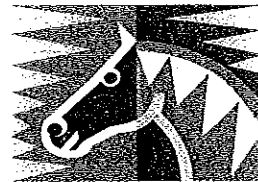
Update on the Ranch

The University of New Mexico's application for a planning grant on behalf of the D. H. Lawrence Ranch to the National endowment for the Humanities was unfortunately not successful. The evaluation process took longer than usual, and we only learned

of the result very recently. The DHLSNA had pledged matching funds in connection with the application. The University is now working on a comprehensive plan for the Ranch's future and is determining whether to re-apply to the NEH in September.

Reed Dasenbrock has been appointed permanent Vice President for Academic Affairs at the University of New Mexico. As interim vice president, he was already a strong voice for the Ranch. A new Development Associate has now been appointed with responsibility for fund-raising for both the Ranch and the Harwood Museum.

Thus, the future of the Ranch is now far more positive than it has been for the past many years. We have many persons to thank for its not having completely deteriorated or been otherwise destroyed as a central place in Lawrence's life and writing.



Friends of the Lawrence Ranch

The Friends of the D. H. Lawrence Ranch is a new community organization dedicated to helping the Ranch realize its potential as a cultural and educational site. The Friends have been meeting in Taos since last October, and a second chapter is now forming in Santa Fe. The steering committee is co-chaired by Art

Bachrach of Taos and Hugh Witemeyer of Albuquerque.

Friends' events have included a slide lecture on Lawrence in New Mexico, receptions at the Mabel Dodge Luhan House and the Witter Bynner House, a Chautauqua performance by Mabel herself, and a business meeting in the gallery where Lawrence's paintings hang at the La Fonda Hotel. Future activities will include a picnic visit to the Ranch, a schools' writing competition, and a Ranch clean-up day.

The Friends will work closely with the University of New Mexico, which owns the Ranch. As the organization grows, chapters in other places and alliances with other groups can be formed. To receive further news about the work of the Friends, please send your name, address, telephone number and e-mail address to Hugh Witemeyer at <hughwit@unm.edu>.



Book Corner

Palgrave-Macmillan, which has been publishing a number of books about Lawrence, has just issued *D. H. Lawrence, Science, and the Posthuman* by Jeff Wallace that considers how the writer's view of the science of his time anticipates ideas in the contemporary theory of the "posthuman."

Art Bachrach's book, *D. H. Lawrence in New Mexico: "The Time is Different There"* will be released by the University of New Mexico Press this December.



D. H. Lawrence Paris Conference

Ginette Roy and Stephen Rowley organized a D. H. Lawrence conference at the Centre de recherches anglophones at the University of Paris-X (Nanterre) from March 30 to April 1, the seventeenth or eighteenth conference Ginette has organized at Nanterre.

The topic, "The Poetics of Movement and Travel in D. H. Lawrence," produced a great diversity of papers. Perhaps the most notable feature of the conference was its strikingly international flavor. The twenty-five participants included Natalya Reinhold from Russia, Marina Ragachewskaya from Belarus, Marija Knezevic from Montenegro, Violeta Sotirova from Bulgaria (studying in the United Kingdom), Mira Konar from India, Kyoko Kay Kondo from Japan, Peter Fjagesund from Norway, and Christopher Pollnitz from Australia. The only two American participants were Keith Cushman and Betsy Fox. The two nations represented by the largest number of participants were the United Kingdom and France.

As always, the conference was distinguished by many excellent papers, lively discussion, superb food (vive la France!), and splendid camaraderie. The unusual topic of the next conference, which is likely to be held at about the same time next year, is "Singular, Plural" (See Call for Papers).

Lawrence is one of three British authors whose poetry **Donald Gutierrez** is reading through 2008 for the New Mexico Humanities Council in Albuquerque and elsewhere, as he has off and on for some twenty years.

James Phelps reports that the book he is editing (with Nigel Bell) and publishing with his new Echoing Green Press, *D. H. Lawrence Around the World: South African Perspectives*, will come out later this year rather than as originally planned.

L. D. Clark has out a new book, a western novel called *The Plains Beyond* (Stansbury Publishing). It is a different kind of western, treating the Texas Plains adventures of a spear-toting black cowboy who seeks to free his wife from Indian captivity.

Call for Papers

In March 2007, the University of Nanterre will hold a series of conferences bringing together all the different research centers, uniting them under the same theme: "Singular/Plural." The terms should be interpreted as widely as possible. Examples of topics: Lawrence's quest for a place for the selected few, his relationship with the mass of humanity, the Lawrentian "I" as univocal or multivocal, problems of gender, the couple, triangular relationships, different versions of different works, interpretations/interpretations, which different Lawrences have been mistaken for Lawrence, etc.

Contact Ginette Roy at <roy@u-paris10.fr> for more information.

Bed and Breakfast

The Sons and Lovers Cottage in Eastwood has a website at <<http://www.sonsandloverscottage.co.uk>>.

The Broxtowe Borough Council D. H. Lawrence Festival 2006

For anyone near Eastwood this summer, a festival packed with activities will be under way between August 14 and September 11. Some of the events planned are:

- A presentation by John Harvey, a crime fiction writer with much of his fiction set in Nottingham, talking about living and writing in Lawrence's shadow

Four book-club discussions:

- Sean Matthews on "Odour of Chrysanthemums"
- Peter Preston on *Etruscan Places*
- John Worthen on *The Prussian Officer*
- An outdoor watercolor workshop with Maureen Lowe
- A Victorian game day at Lawrence's birthplace
- A series of photographs from Lawrence's life
- A short-story creative writing course
- French, American, German, and Italian culinary evenings at the Rocking Horse bistro to celebrate Lawrence's life travels

For more information, see:

<http://www.broxtowe.gov.uk/index/tourism/tourism_dhl/dhl_festival.htm>.



A Brief Guide to the D.H. Lawrence Ranch

By Art Bachrach and Hugh Witemeyer
(Co-Chairs of the Steering Committee of
The Friends of the D. H. Lawrence Ranch)

The Ranch, located in San Cristobal some twenty miles north of Taos, New Mexico, is open 365 days a year, except for emergency closures. Lawrence lived there for a period of eighteen months over three visits between 1922-25. There is no admission charge.

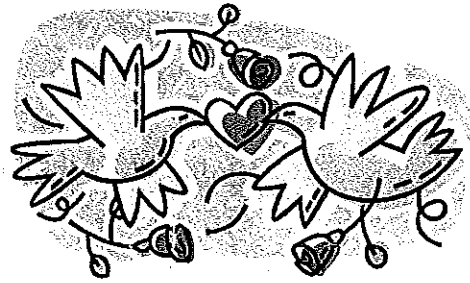
To get to the Ranch, take Route 68 (the main road) north. Fourteen miles from the center of Taos you will see sign on the right that says "San Cristobal." Next to it is a sign that reads "D.H. Lawrence Ranch." Turn tight on the dirt road and follow the signs another six miles to the Ranch. When you arrive, you will park in front of the Caretaker's Cabin.

To the left of the Cabin is a trail that you can take up to Dorothy Brett's cabin on the left. The cabin in which she lived is a scant 9' x 11'. The typewriter she was supposed to have used to type some of Lawrence's manuscripts can still be seen on the Ranch.

On the right, stands the Homesteader's Cabin, where the Lawrences lived. The chair on the porch is said to have been made by the writer himself. On the side of the cabin is a painting of a buffalo by the Taos Pueblo Indian, Trinidad Archueleta. He had worked for Lawrence and painted this mural in 1935, five years after Lawrence's death. In front of the cabin is the pine tree painted by Georgia O'Keeffe after Lawrence's death. Lawrence eulogized this tree in his essay "Pan in America." Other writings set at the Ranch include Part Three of *St. Mawr*; "The Princess;" a number of poems including "The Blue Jay," "Mountain Lion," and "Autumn at Taos;" and the essays "New Mexico" and "Reflections on the Death of a Porcupine."

Follow the path that leads up to the white Memorial where Lawrence's ashes are interred. You may enter the Memorial and add your name to the Guest Book signed by visitors from around the world. From the Memorial, looking west toward the Rio Grande Gorge and Arizona, you can enjoy what many consider the best view in the entire Taos Valley.

Have a fine visit!



The D. H. Lawrence Society

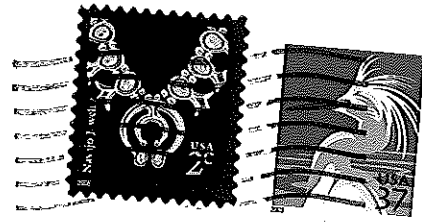
The D. H. Lawrence Society, based in Eastwood, has scheduled several talks this year:

- "Lawrence and the Writing Life: 'Two Blue Birds'" by Howard J. Booth (March)
- "'Returns of Returns': Lawrence's Re-Creation of Eastwood in his Late Essays" by Bethan Jones (February)
- "Talking Lawrence: the Colliery Plays" by Hillary Hillier (April)
- "An Actor's Path to Lawrence" by Graham Lines (May)
- "Lawrence and Death" by Helen Baron (June)

These talks all take place at the Eastwood Library.

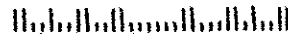
**The D. H. Lawrence Society
of North America**

737 East Lake Avenue
Baltimore, Maryland 21212



Nancy L. Paxton
Dept. of English
Northern Arizona University
Box 6032
Flagstaff, AZ 86011

Member since 2005/expires 12/2006



Membership in the DHLSNA costs US \$10 a year, with the option of a ten-year membership for US \$60. Make checks or money orders payable to the D. H. Lawrence Society of North America and send to Louis Greiff, Membership Treasurer, Division of English, Alfred University, Alfred, NY 14802.